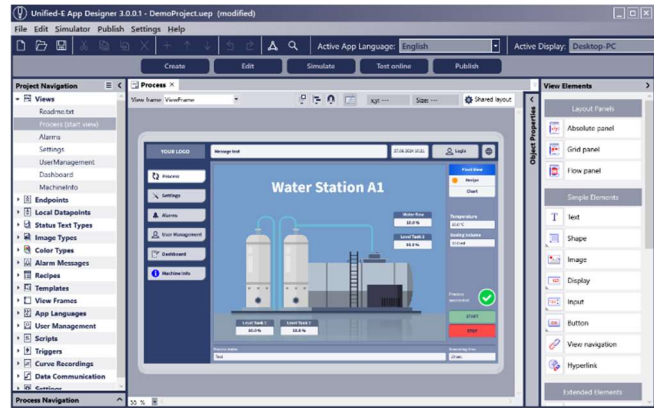


Unified-E Direct License

The Unified-E Direct License is the ideal solution for machines and plants with a single operator device, offering maximum efficiency at an attractive fixed price. It grants usage rights for the Unified-E HMI visualization software, which consists of multiple programs and enables both the configuration and operation of control apps. With the Unified-E App Designer, you can create your control apps, which are then deployed on a single operator device using the Unified-E App Client, activated by the license. With the universal recipe management feature, it is also possible to create operator interfaces for machines that comply with FDA requirements (FDA 21 CFR Part 11).



The Direct License allows direct communication between the operator device and controllers without the need for a gateway or web server. The operator device uses the Unified-E App Client to communicate via native protocols such as those of Siemens or Allen-Bradley, as well as standards like OPC UA or Modbus. Thanks to the availability of the Unified-E App Client for Android and iOS, this license is also ideal for Android- and iOS-based operator devices.

After license activation, an unlimited number of apps can be used on the licensed device, with the number of endpoints or datapoints limited only by the device's hardware capacity. Software updates and new features are included in the license, and a one-time license transfer to a replacement device is possible within five years.

Specification

Product Name	Unified-E Direct License
Product ID	UE-DIL-02-000 Article No.: 10102000
License Type	One-time payment, designated for a single operator device
Software Scope	The license grants the right to use the Unified-E App Designer for configuring operator apps. It allows the use of the created operator apps on a specified operator device (hardware-bound license).
Validity Period	Lifetime of the operator device; transferable twice within the first 10 years
Supported Platforms	Unified-E App Client (Unified-E App): iOS 12 or later, Android 6.0 or later, Windows 10 or later Unified-E App Designer: Windows 10 or later
System Requirements	System requirements depend on the complexity of the configuration
Included Features	See www.unified-e.com , all Unified-E App Designer features available
Software Updates	Software updates are included for the entire usage period
Software Download	https://unified-e.com/en/downloads.html
Trial Option	Free trial available for 48 hours for development and testing purposes on any operator device
Support	Basic support for technical inquiries is included for the first 2 years after purchase, Important bug fixes are available in the latest software version. Contact: support@unified-e.com
License Agreement	https://unified-e.com/en/licenseagreement.html
License Key Registration	The license key will be provided via email after purchase through a distributor. Follow the instructions in the email to register and activate the license for a specific operator device